



# SOUL COLLECTION

## **A collection of paintings by Eva Krane to celebrate Mindfulness in May**

An exhibition of paintings by designer-turned-artist Eva Krane, of Sydney's STUDIO Z, the SOUL collection is presented at 1 O'Connell Street in collaboration with contract furnishings brand Haworth and innovative property group Lendlease.

Timed to celebrate annual wellbeing program Mindfulness in May, the artworks represent a creative journey responding to our challenging recent times. Eva found mindfulness, meditation and painting to be inspiring ways to find inner peace and fresh direction.

The collection comes from a personal place of expression with pigment in its purest form: paint. Canvases convey emotional memories through dynamic colour combinations. They can also be translated into intriguing commercial art across diverse media for use in architecture or interiors, as well as upholstery fabrics, textiles and wallcoverings.

Is it time to add some soul to your space or project?



## About the artist

German-born designer Eva Krane is the founder and director of Sydney-based STUDIO Z, a boutique interior graphic design studio specializing in eye-catching surface design, signage and navigation.

After studying at Holland's Maastricht Academy of Fine Arts and Design, Eva honed her craft over two decades in the US, Asia and Australia. She loves harnessing colour, pattern and finishes to connect with people and transform spaces into emotive experiences.

STUDIO Z provides design solutions for sectors spanning commercial, health, education and the workplace, combining functional narratives with atmosphere. For this exhibition, Eva has pivoted to share her 'side hustle', creating expressionistic paintings tapping into more personal themes.

Proudly brought to you by



HAWORTH

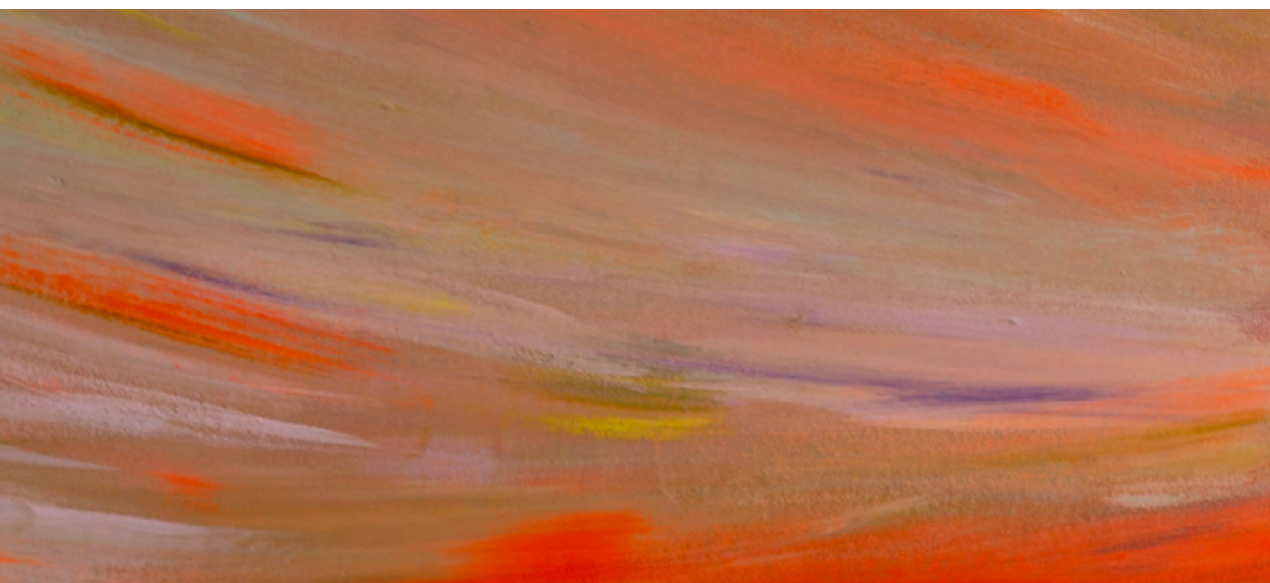


STUDIO Z



Photograph by Fiona Susanto





### **'Now'**

Acrylic on Plywood

Oak Frame

77w x 117h cm

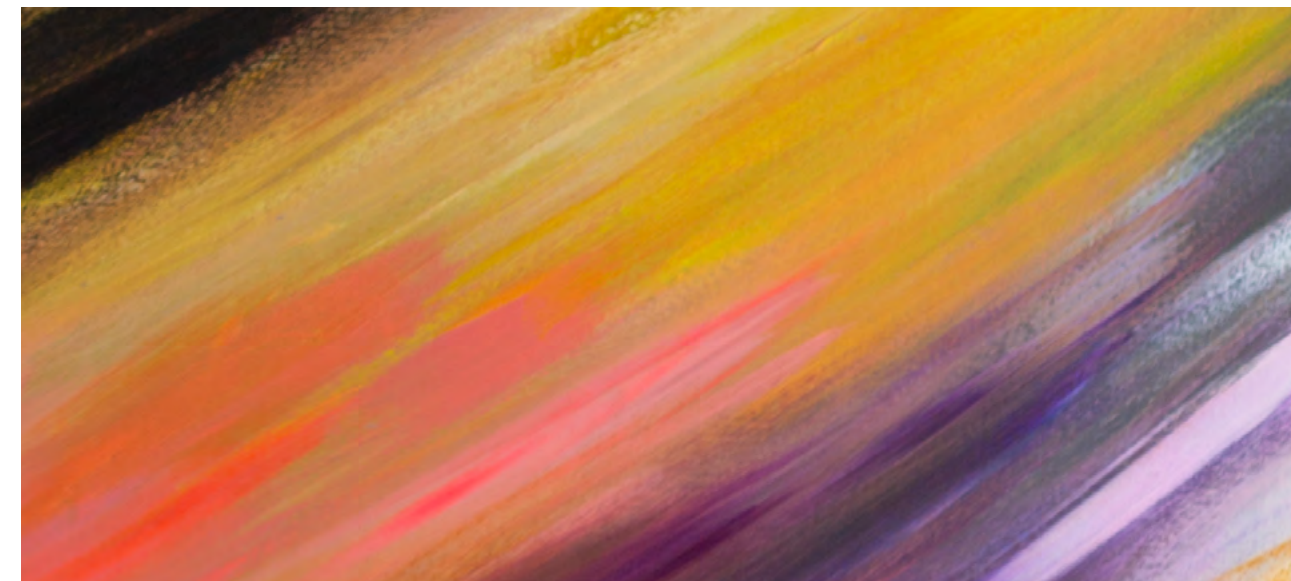
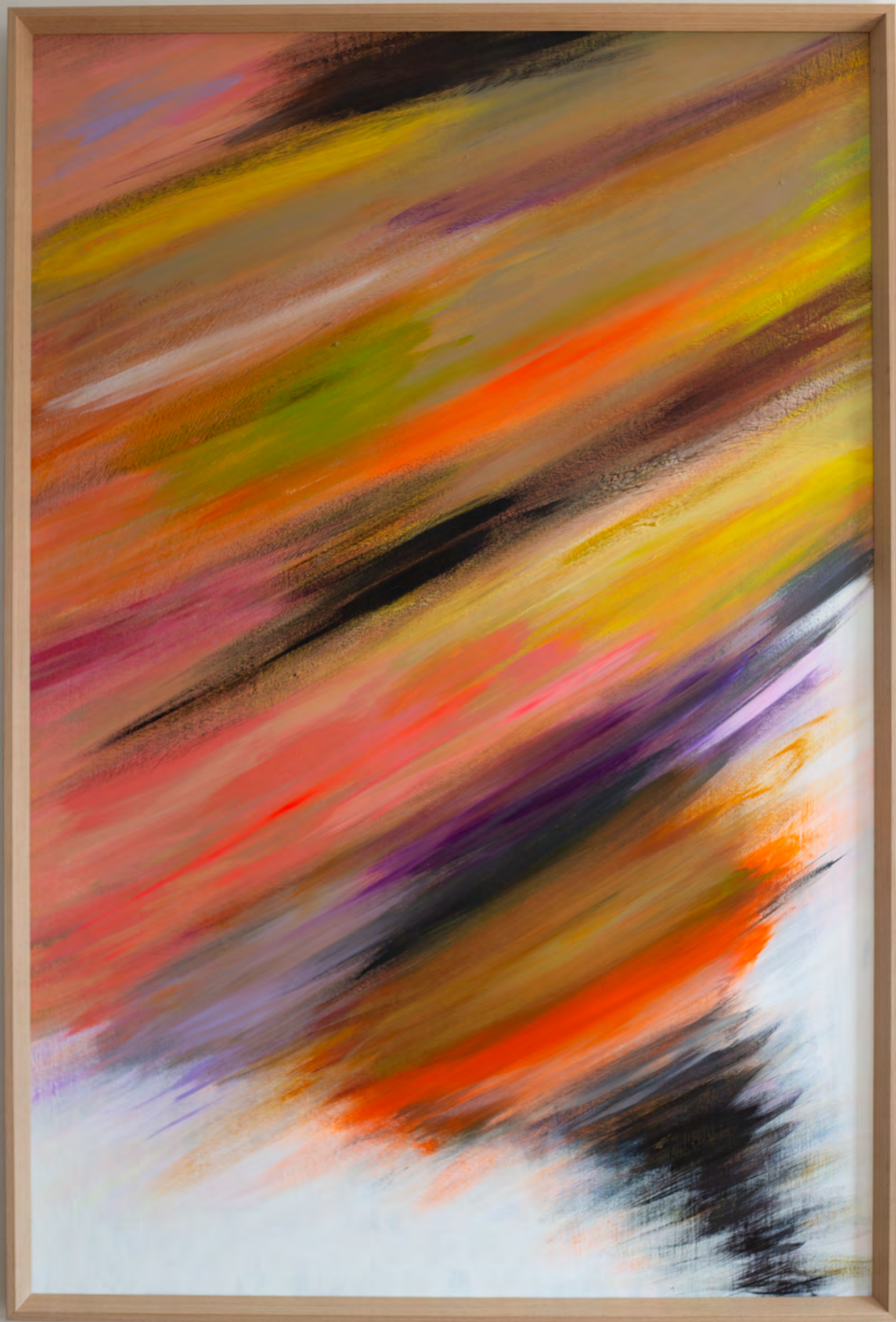
Life can seem like a storm surrounding us, with intense periods of hectic activity and stress. That whirl of energy can be destructive but animating and creative too. If we think of our lives as a tornado, yet stay centered and in the moment, we can see the beauty of it all.











### **'Here'**

Acrylic on Plywood

Oak Frame

77w x 117h cm

If we look into a hurricane we realize that the centre or 'eye' of the hurricane is still. A companion to **'Now'**, but with a warmer, brighter palette and bigger, more expansive form, **'Here'** reminds us that in the midst of chaos we can always find an island of calm in the eye of the storm.





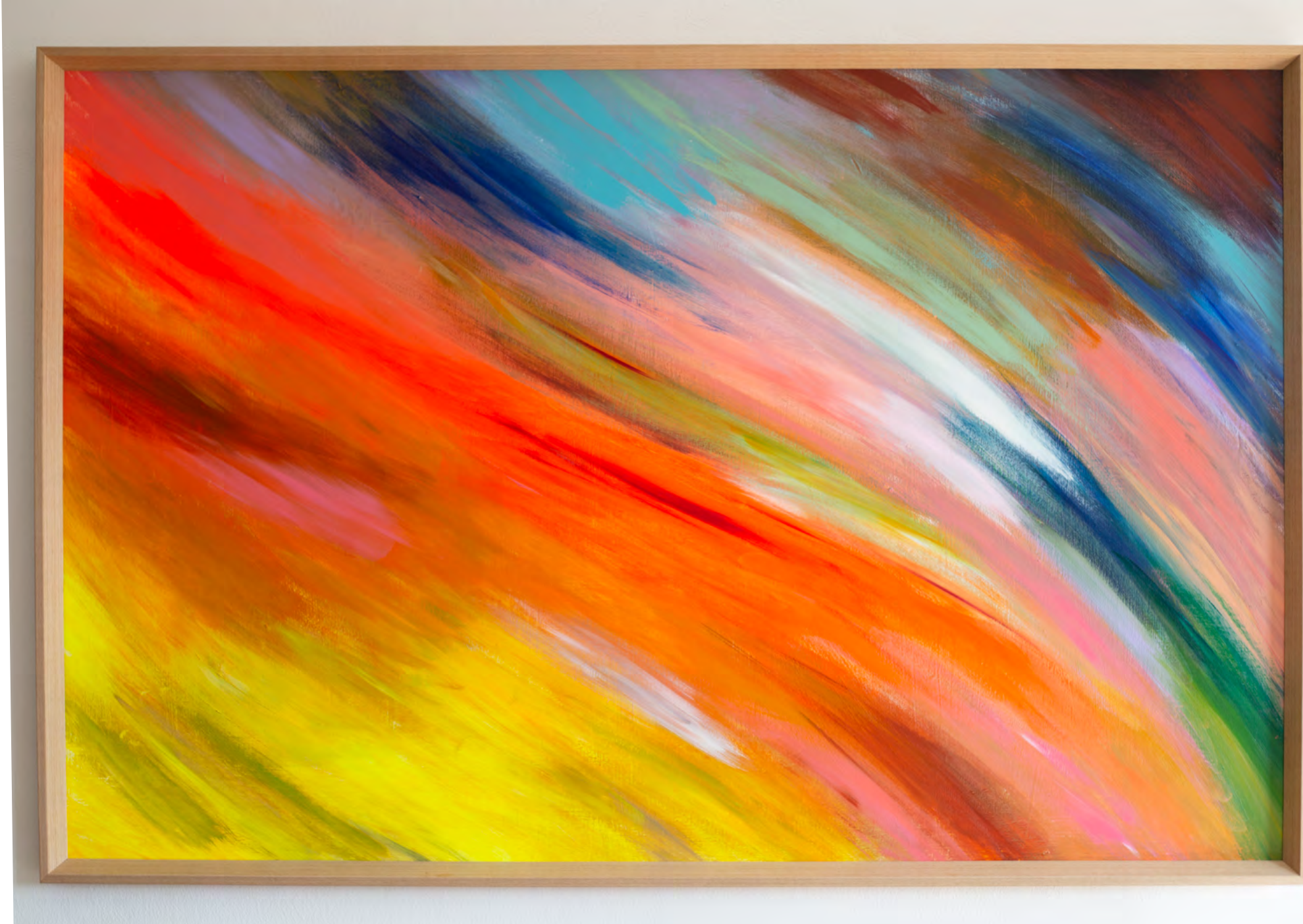


**‘Moment’**

Acrylic on Plywood

Oak Frame

117w x 77h cm



A bundle of energy, detailed painting **‘Moment’** zooms into the heart of **‘Here’** or **‘Now’**. Taking a moment out of our busy lives allows us to see the world with more perspective – to consider our actions and make better choices, rather than just reacting blindly.









## **'Flow'**

Acrylic on Canvas

Oak Frame

70w x 100h cm

Reminiscent of dawn light over water, **'Flow'** feels free, with soft tones and delicate washes of paint. When you're in a really good head space everything just flows and you don't have to worry about anything. It's a safe and happy moment when things flow and feel great. Relax, embrace life's abundance and go with the flow...











### **‘Compassion’**

Acrylic on Canvas

Oak Frame

41w x 51h cm

With its calming palette of sea-and-sky blues, serene green, sunny yellow and dusky-pink flesh tones, this painting channels the spirit of compassion. Showing empathy and care, both for others and oneself, creates a kinder, more interconnected world. As the Dalai Lama says, “when we practice compassion, we have more strength, peace and joy”, which transfers to others in our lives.







'Compassion' interpreted on Acoustic Paneling





**'Vulnerability'**

Acrylic on Canvas

White Frame

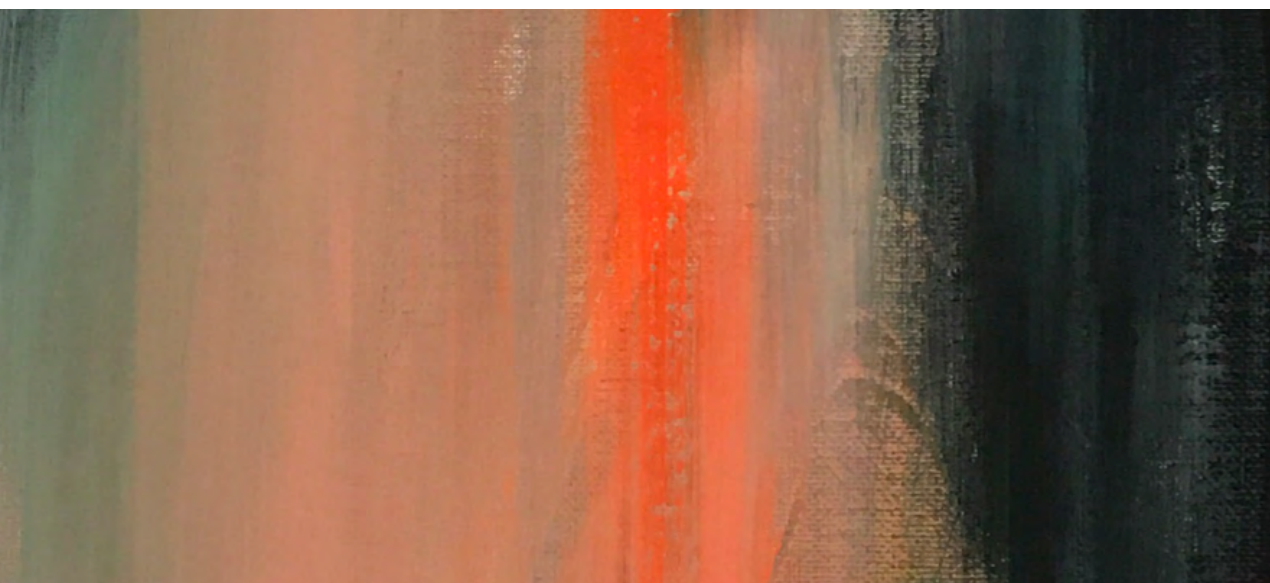
50w x 50h cm

Loose strokes of paint in soft pastels intertwine with hints of vibrant, bolder shades, suggesting sensitivity backed by inner strength. The gentle and fragile nature of being vulnerable is part of the fabric of the human soul. Only when we recognize our vulnerability to ourselves and others can we heal.









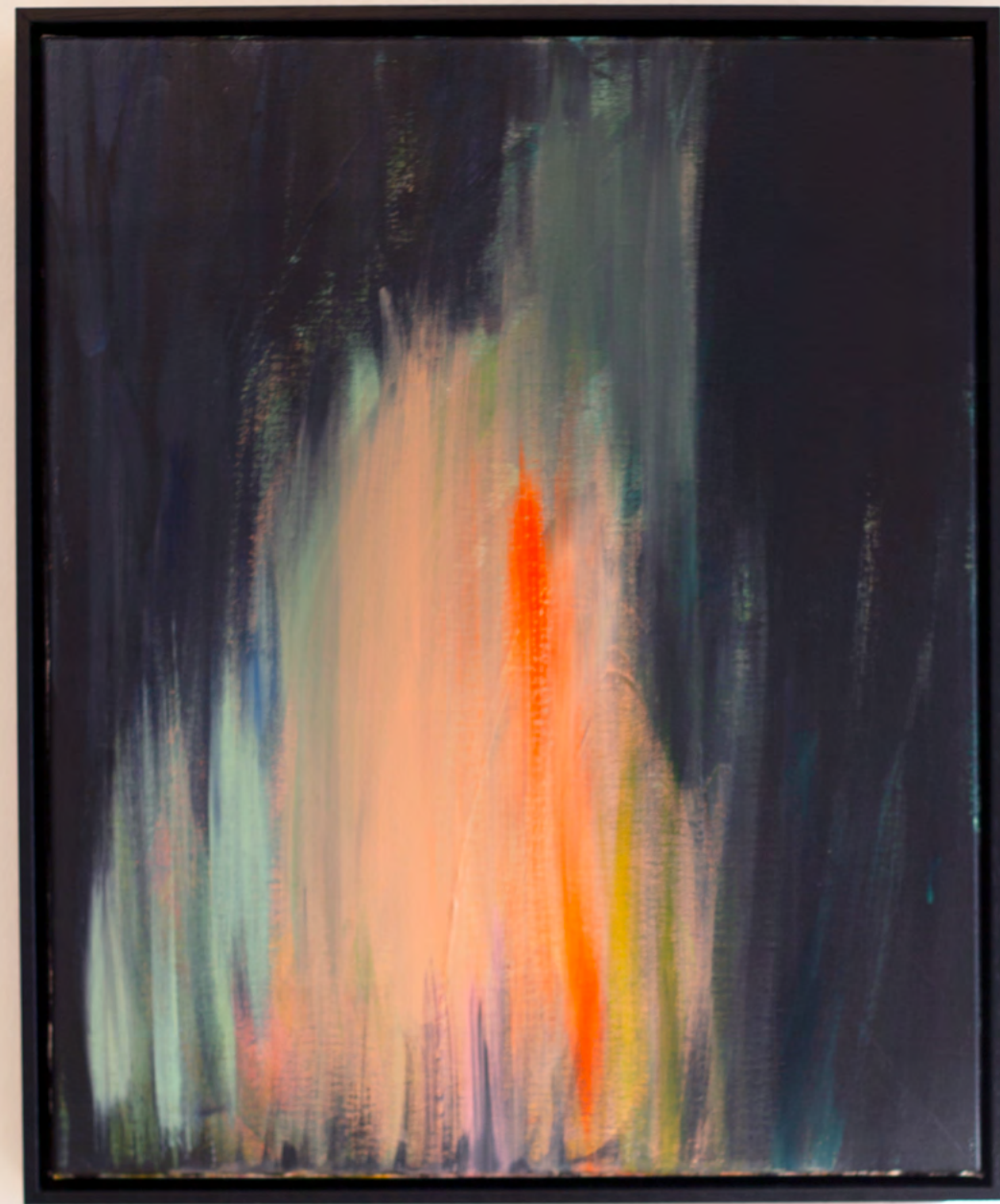
### **‘Spark’**

Acrylic on Canvas

Black Frame

41w x 51h cm

Every adventure, idea or passion starts with a spark. A spark describes the moment we start feeling strongly towards a path in life, whether it's the beginning of a new project, journey or love affair. Suddenly we see something that wasn't there before, like lighting a fire in the night. We all need to find our transformative little spark.











### **'Depth'**

Acrylic on Canvas

Black Frame

41w x 51h cm

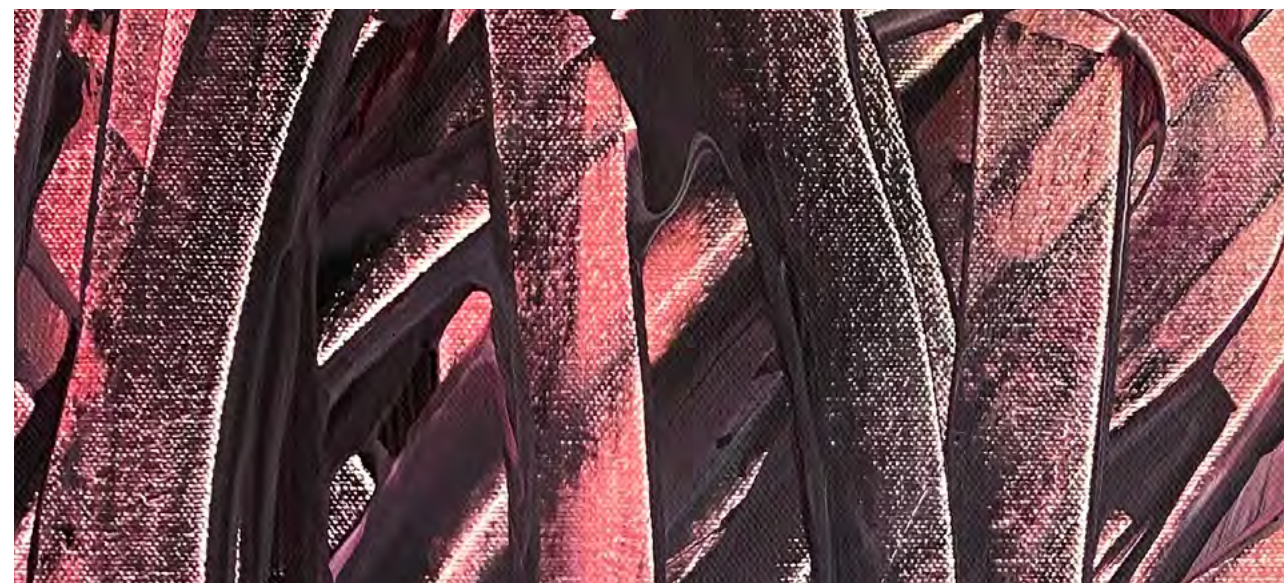
More moody, **'Depth'** captures the complex layers of the psyche, with darker tones on top and lighter colours beckoning underneath. Created using sponge effects, it hints at the different aspects of the soul. Meditation can guide you on a deep dive into the core of self.











**'Fear'**

Acrylic on Canvas

Black Frame

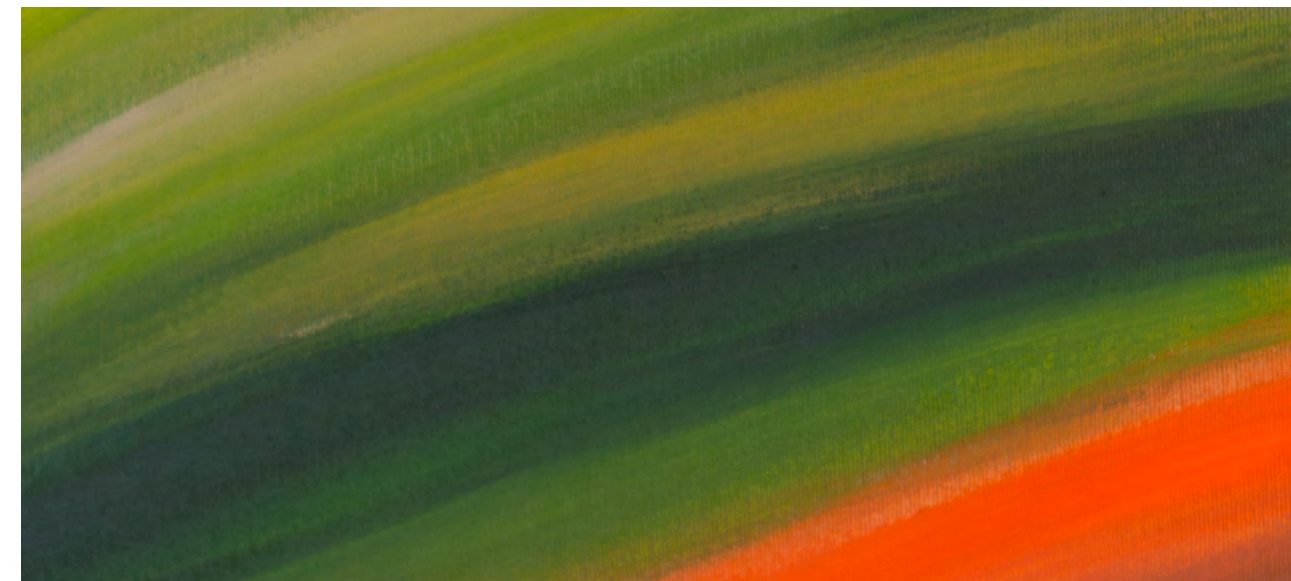
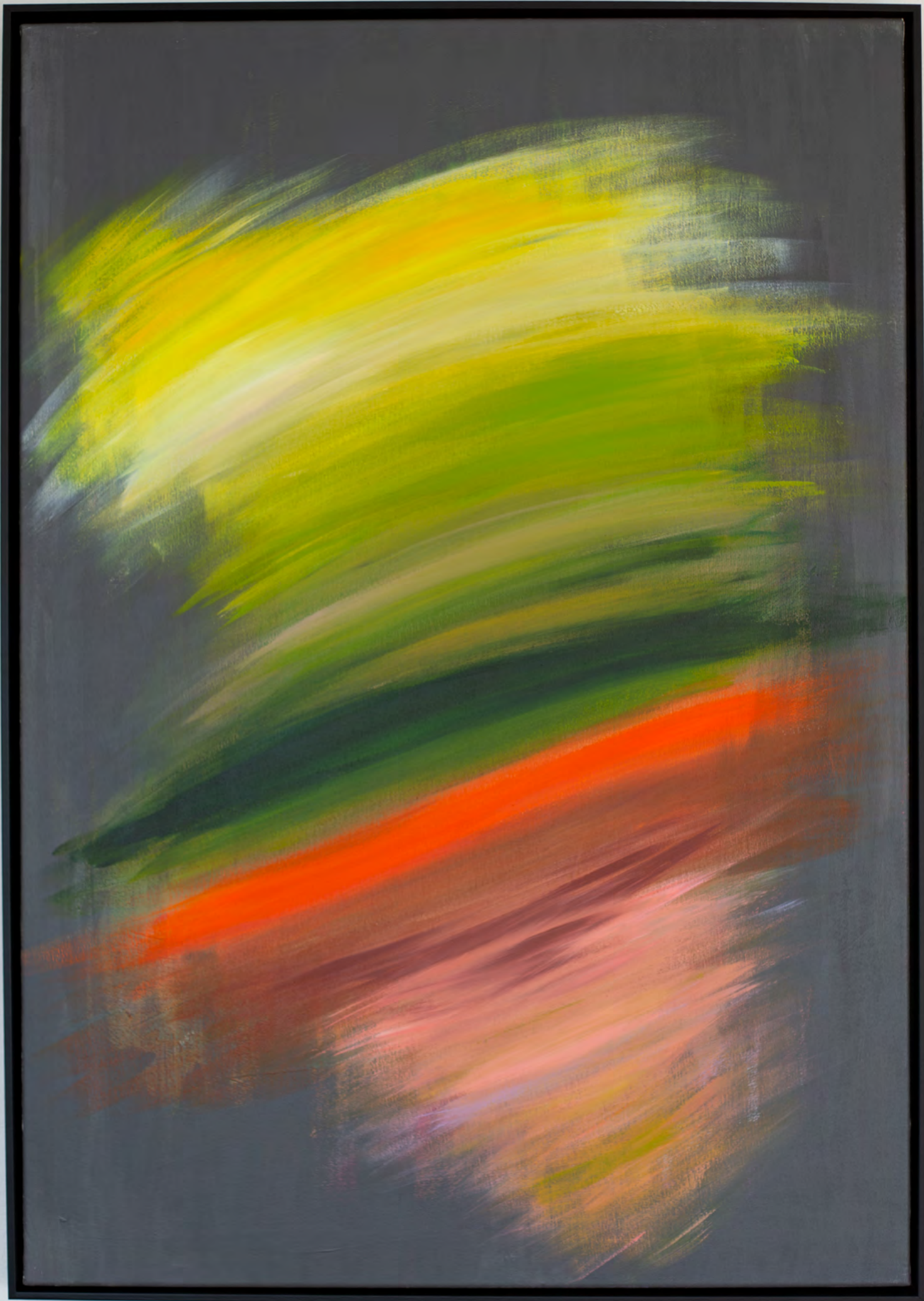
41w x 51h cm

Fear, pain and suffering are integral to the human experience and often feel like a constricting straitjacket. The rawness and intensity of negative emotions – expressed here in visceral red and black – can be useful though, helping us to understand our psychological boundaries and encouraging us to go beyond them. Find freedom from fear through mindfulness and self-care.









### **'Rhythm'**

Acrylic on Canvas

Black Frame

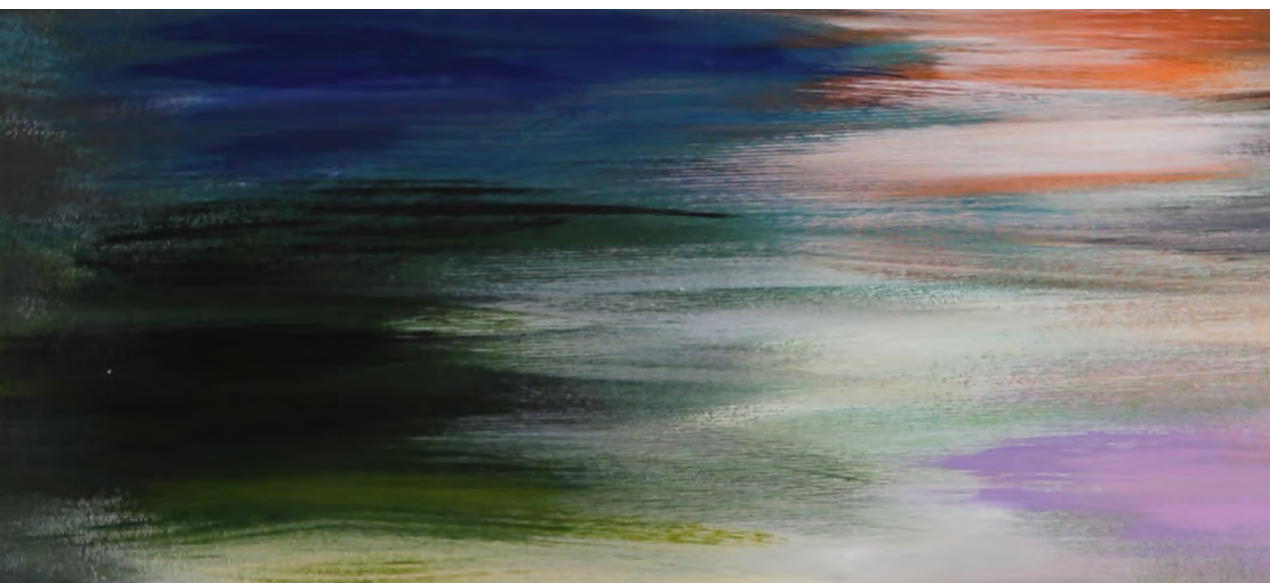
70w x 100h cm

Life is best when it feels like dancing to the rhythm of the universe. The key is to keep one's balance. If we spin too fast or too slow we might fall. Rest assured that someone will pick us up and we'll continue in a new way. Akin to **'Now'**'s tornado swirl, this painting expresses confident, life-affirming energy.









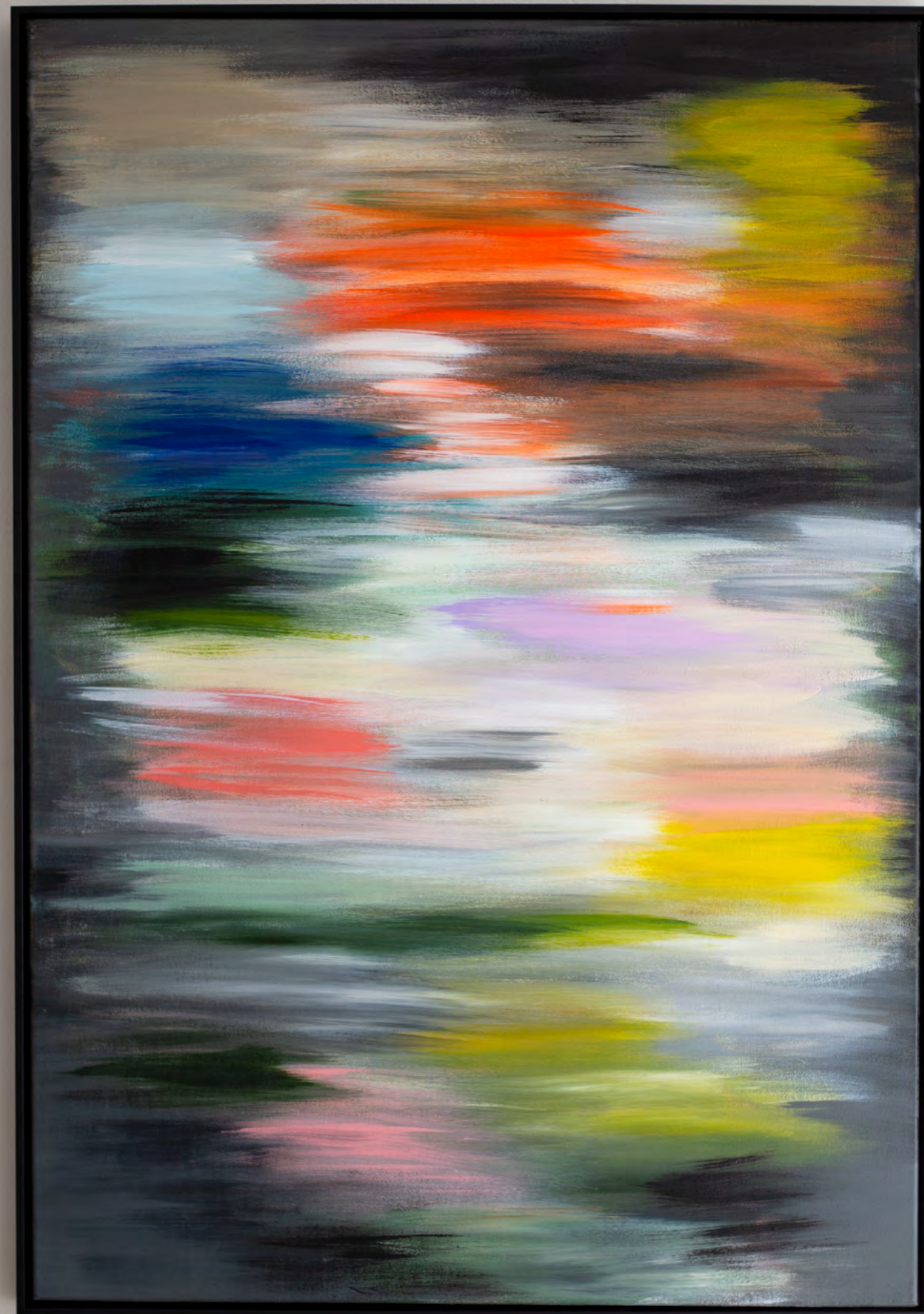
### **'Soul 1'**

Acrylic on Canvas

Black Frame

70w x 100h cm

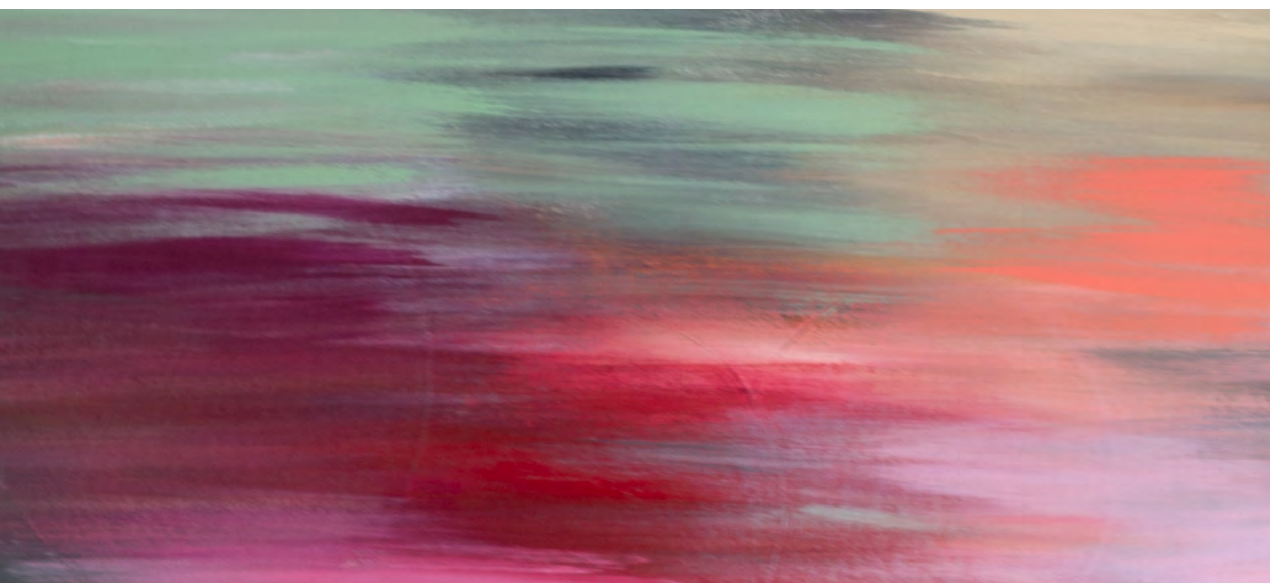
From the darkness of challenging states of mind joy and content bubble up. There's a warmth, serenity and light rising in **'Soul 1'**, which we can all discover if we only take time out to sit quietly with ourselves.











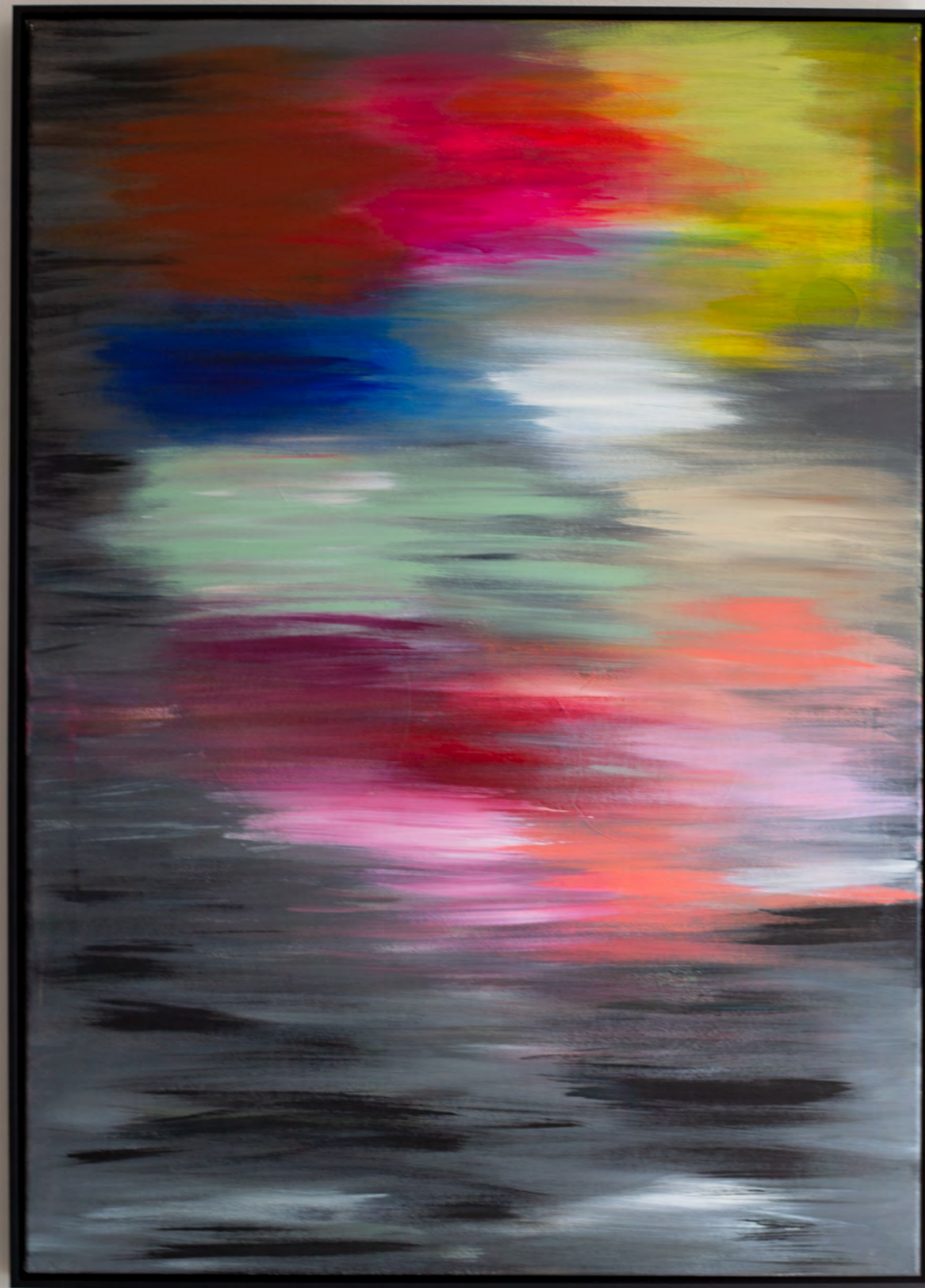
### **'Soul 2'**

Acrylic on Canvas

Black Frame

70w x 100h cm

A rainbow of intriguing colour combinations, this canvas celebrates the many moods of our soul: playful and passionate, timid and spontaneous, melancholy and joyful.

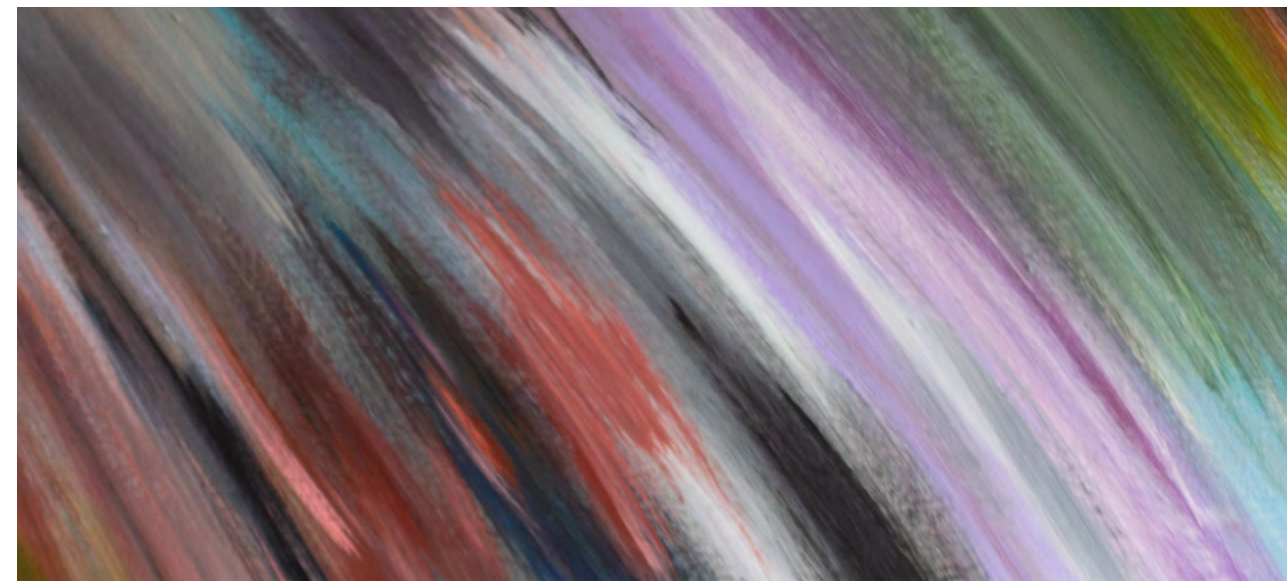
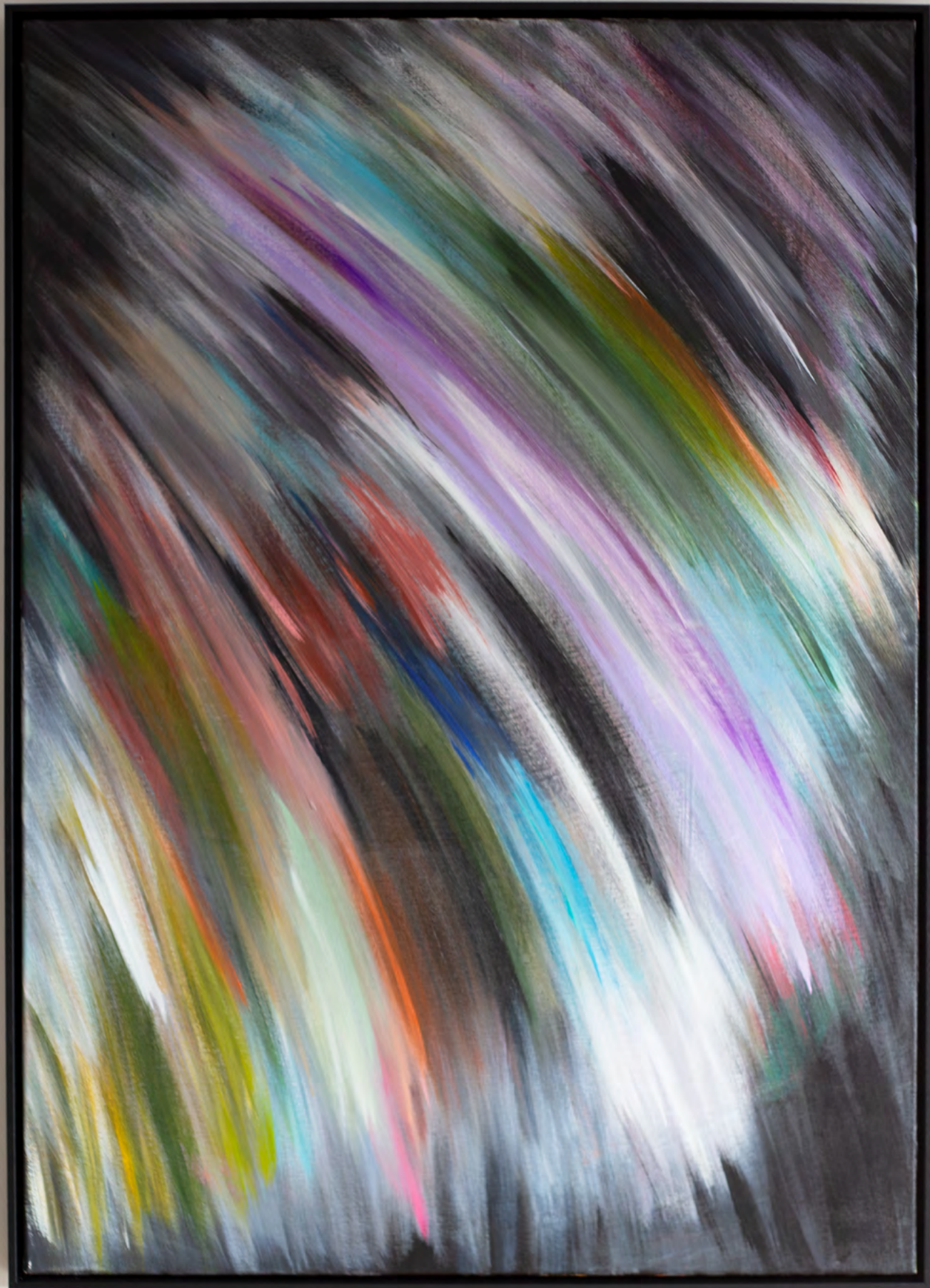






'Soul 2' interpreted on Archival Paper with Frame





**'Limitless'**

Acrylic on Plywood

Black Frame

70w x 100h cm

A companion to **'Soul 1'** and **'Soul 2'**, this canvas conveys a bright burst of energy like an exploding firework, with sweeping, speedy strokes enticing you to journey beyond your boundaries. Feel empowered as you are capable and limitless.









# Thank you.

We hope this catalogue gives you a better visual understanding of the type of work we do. If you would like to stay in touch or talk about your project, please connect with us.

Insta @studiozdesign  
 T +02 9188 7891  
 E info@studio-z.com.au  
 W www.studio-z.com.au

A The Hub  
 223 Liverpool St  
 Darlinghurst NSW 2010

This exhibition would have not been possible without the generous support of



HAWORTH

